



Boat & Beach Wise

Keeping Kiwi Kids Sea Safe and Active

**TE WHAREKURA
O WAKA TUAONE**

**The Boat & Beach Wise
Education Centre**

From 2020 children in Wellington Schools will begin learning through **TE WHAREKURA O WAKA TUAONE | The Boat & Beach Wise Education Centre.**

The centre will include facilities and equipment to help students develop water skills for life and safer boating skills while engaging in community focused environmental, technological and social studies investigations.

Designs for amenities such as a penguin hotel, a paua nursery, an inside classroom and an equipment shed have been included in the plans developed by both Worser Bay Boating Club and the Wellington City Council.

Community consultation on conceptual plans for an anemone garden and an outside classroom in the dunes is taking place during 2018 and 2019.



TE WHAREKURA O WAKA TUAONE

Boat & Beach Wise Education Centre

The six elements of the Boat & Beach Wise Education Centre: Outside classroom, Anemone garden, Equipment shed, Inside classroom, Paua Nursery and Penguin Hotel.

Drawing	1.0
Date	13/11/2017
version	2

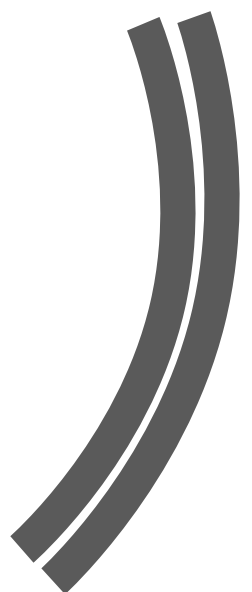


Outside Classroom (Concept)

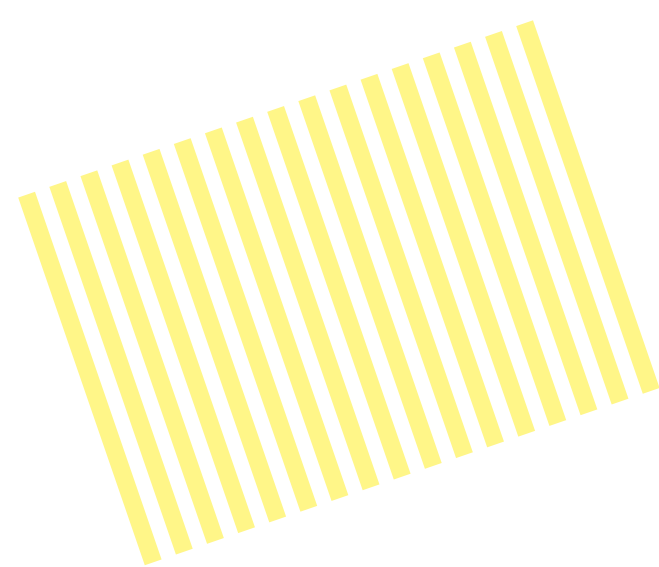
The sand dunes in the middle of Worser Bay beach have grown so big over the last five years that they have now engulfed the existing ramp to the beach and are encroaching on the pavilion, making it difficult to get boats in and out of the storage shed and down to the beach. Minor works in this area could create a much more usable space for learners as they participate in the Boat & Beach Wise programmes as well as a sheltered space for the general public to use when they visit the beach.



Grass area around Pavilion (Initial ideas)
Re-level grass through this area so that it is flat at the level of the pavilion floor. Build low retaining walls where the grass meets the dunes to ensure that the dunes stay in place and no longer encroach on this space. Establish a set of picnic tables adjacent to a public BBQ. Create a waka ōhanga for storage of waka ama, kayaks and sup.



Tiered semi-circular seating (Initial ideas)
Install two rows of seating in a semi circle capable of seating 30 students and also acting as a retaining wall for the dunes.

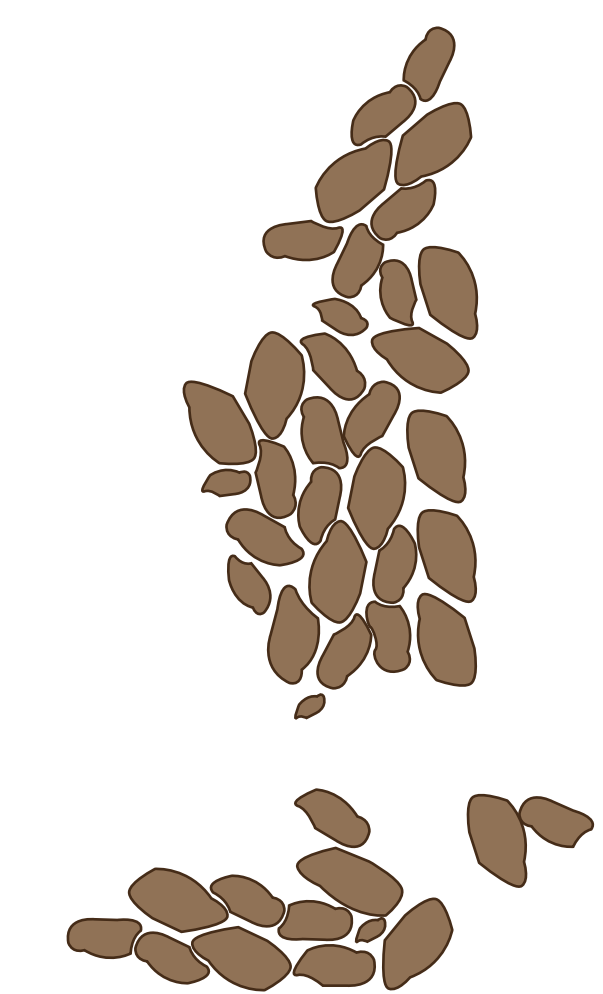


Ramp to beach (Initial ideas)
Re establish a wide wooden ramp to the beach, with the base at the height of the top of the beach and the top at the height of the pavilion floor.



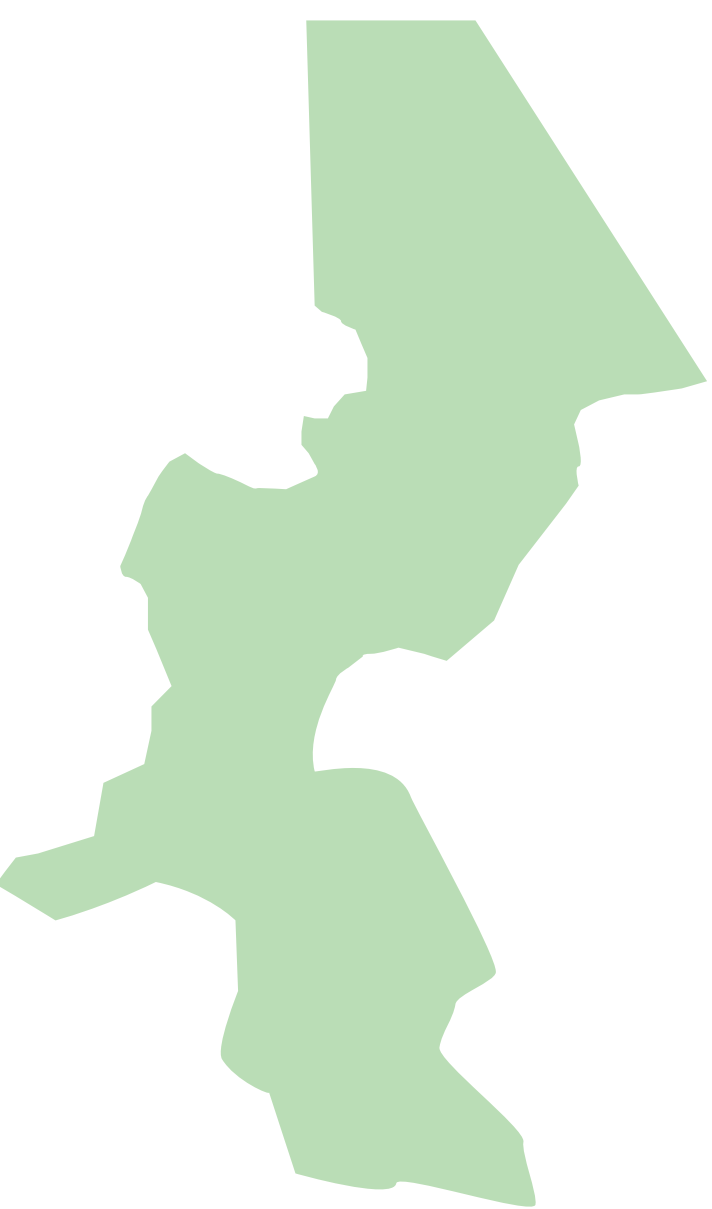
Anemone Garden (Concept)

The clubs at Worser Bay are starting to feel the effects of sea level rise. The new breastwork and ramp structures being installed by Wellington City Council are designed to mitigate the effect of sea level rise over the next fifty years and provide protection against the impact of storm surges. Even with these enhancements the Worser Bay Life Saving Club building is still likely to be susceptible to wave action during storm events due to the gaps in the natural protection provided by the rocks adjacent to the life saving club building. Protection could be improved by adding rock revetment or similar in this area.



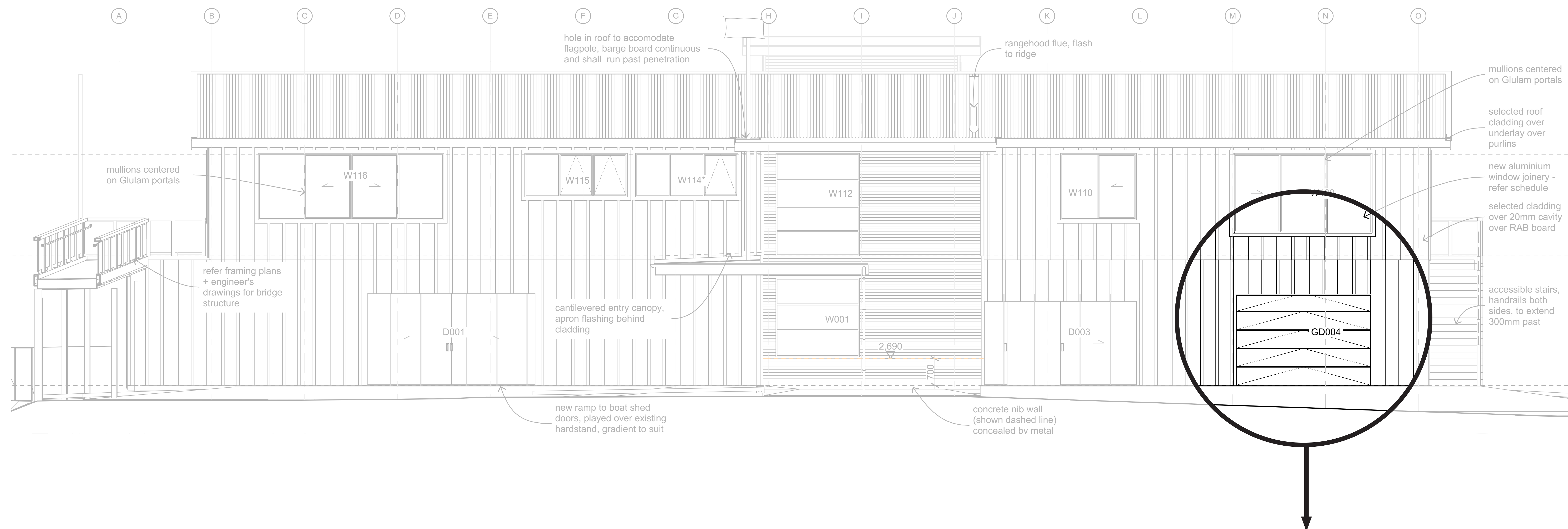
Rock revetment or similar (Initial ideas)

The positioning of rock revetment or similar amongst the existing rocks could create a wave break that reduces the worst of the impact of storm waves on the life saving club.



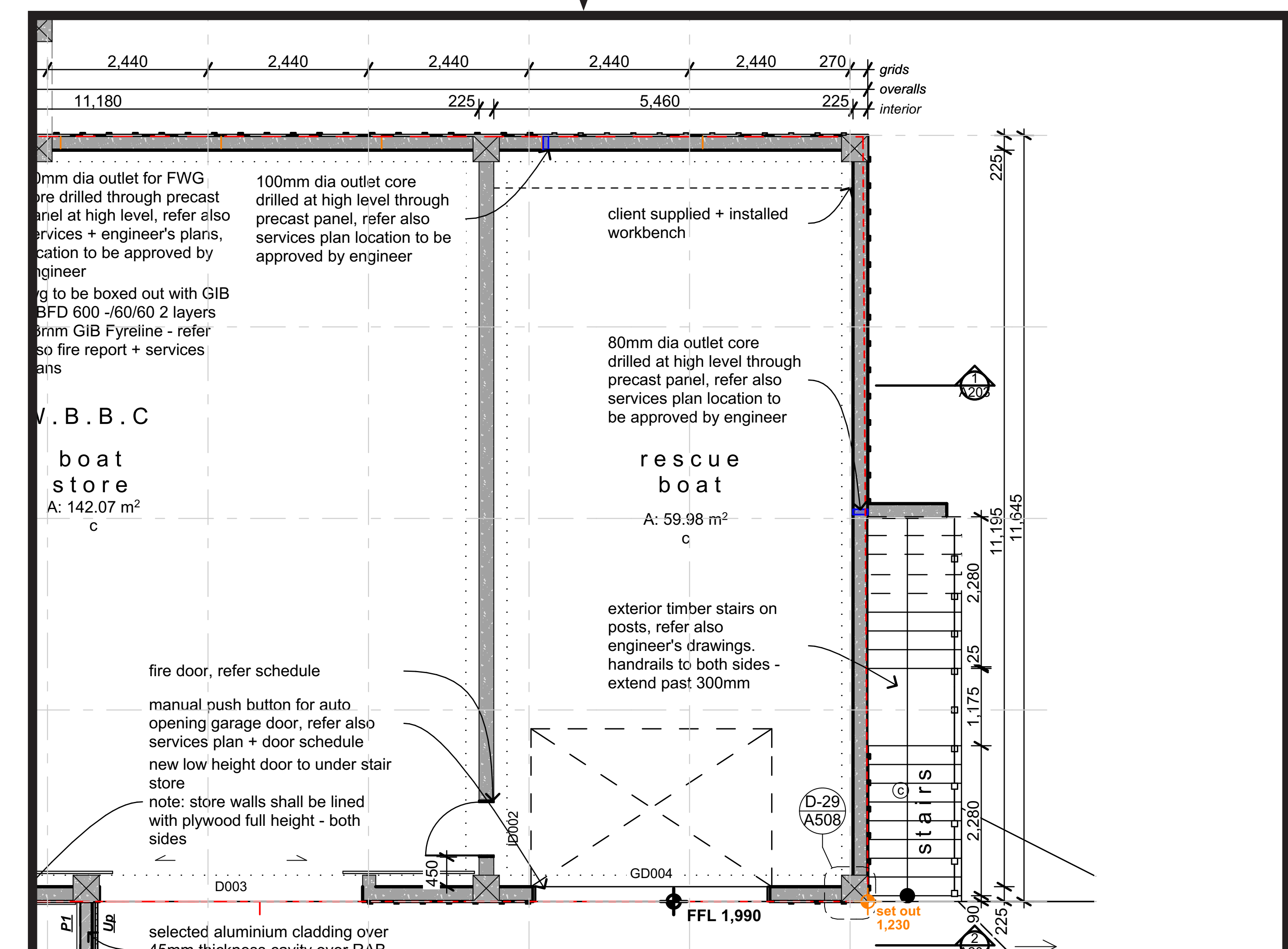
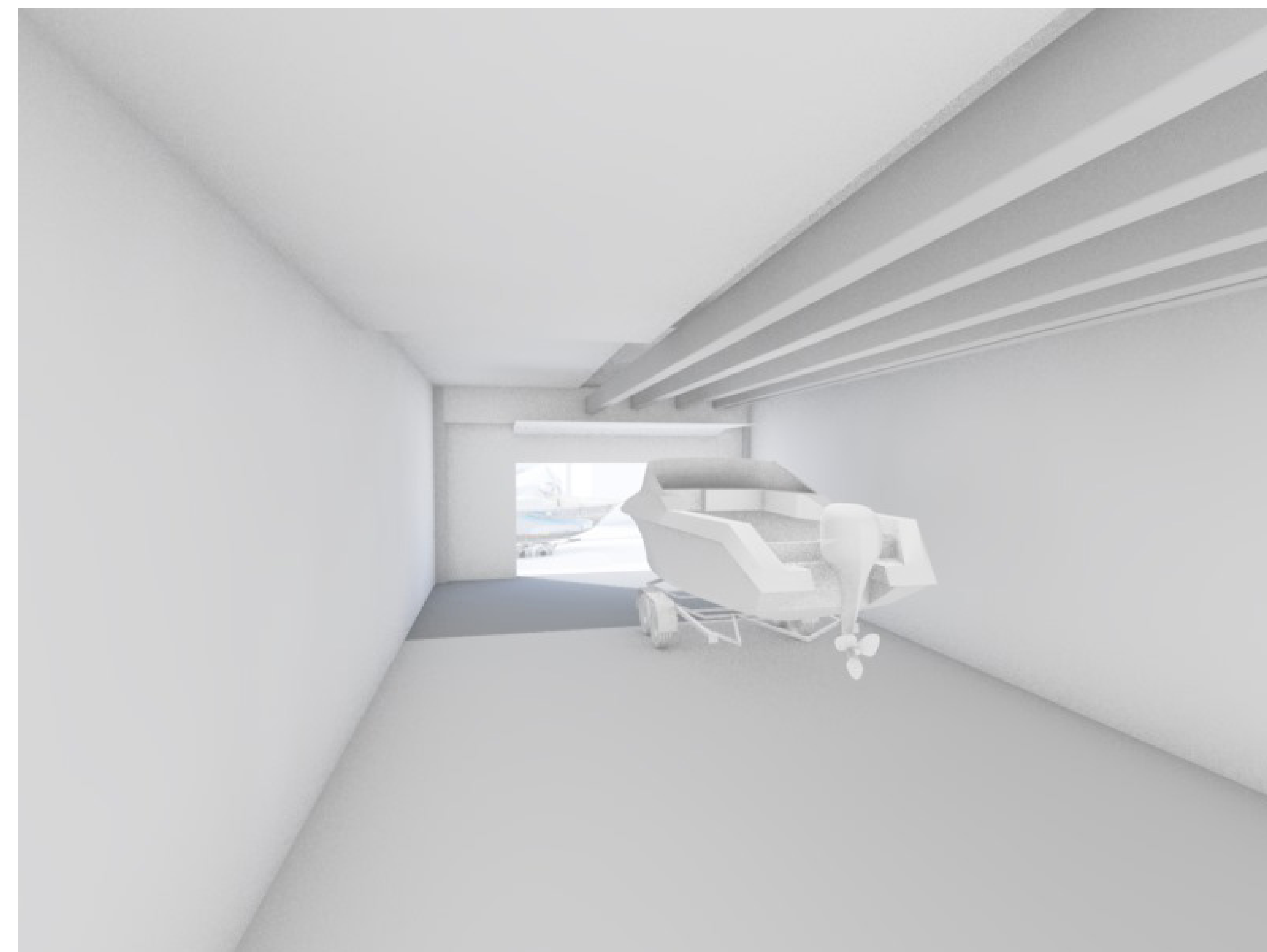
Anemone garden (Initial ideas)

The rock revetment would also enable a large shallow rock pool area to be created. Local schools could work with scientists and other experts to establish and monitor an anemone garden, with habitat for small fish and invertebrates in the pool. Bathyscope underwater viewers could be available for the general public to view the rock pool life.



Equipment shed

The southern shed on the ground floor of the new building will be used to store equipment for the Boat & Beach Wise programme. This will include the rescue boats, snorkels, wet suits, life jackets, instructor's wet weather clothing, habitat monitoring equipment, coach marks and a small workshop with a collection of tools.



TE WHAREKURA O WAKA TUAONE

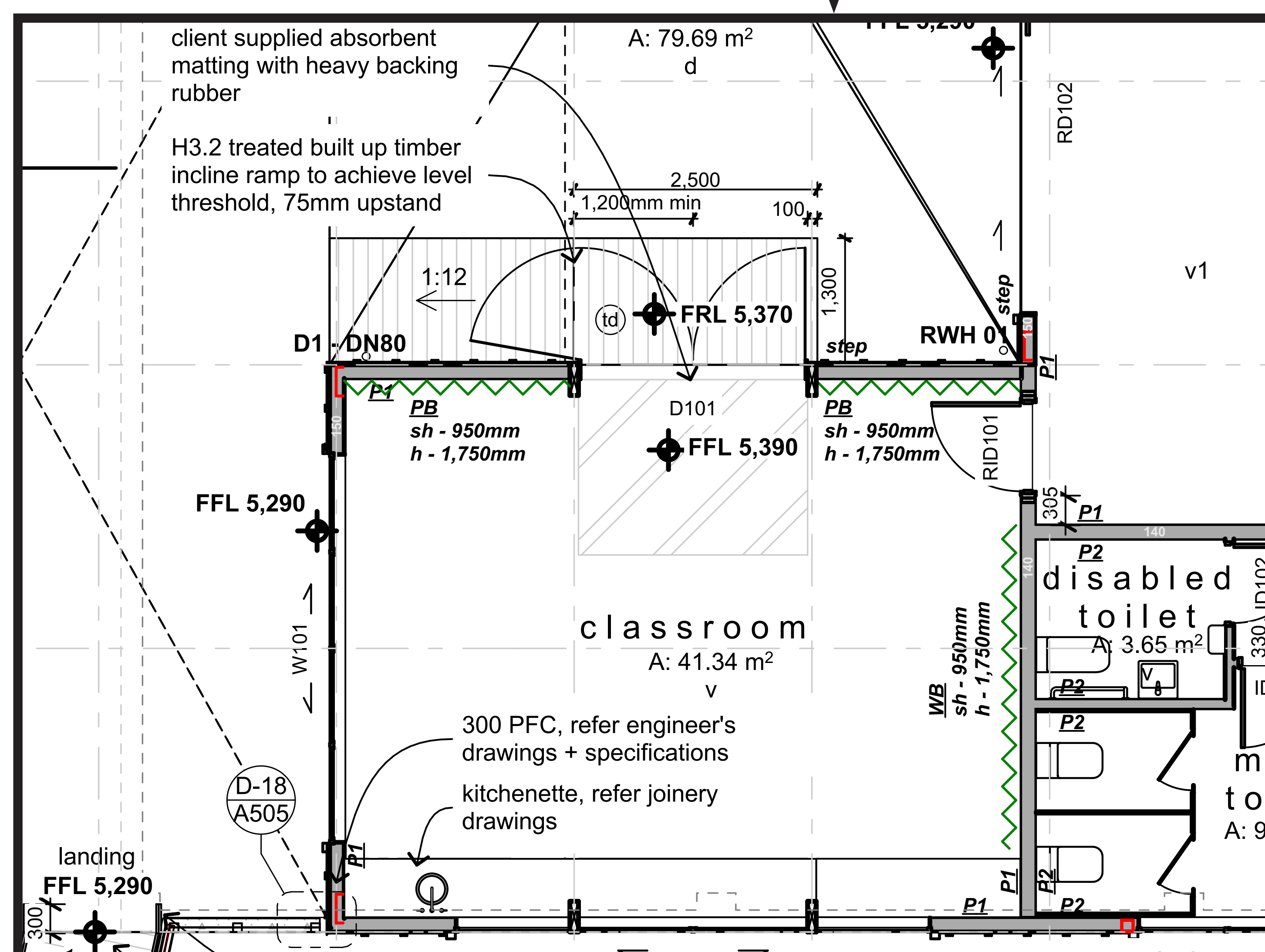
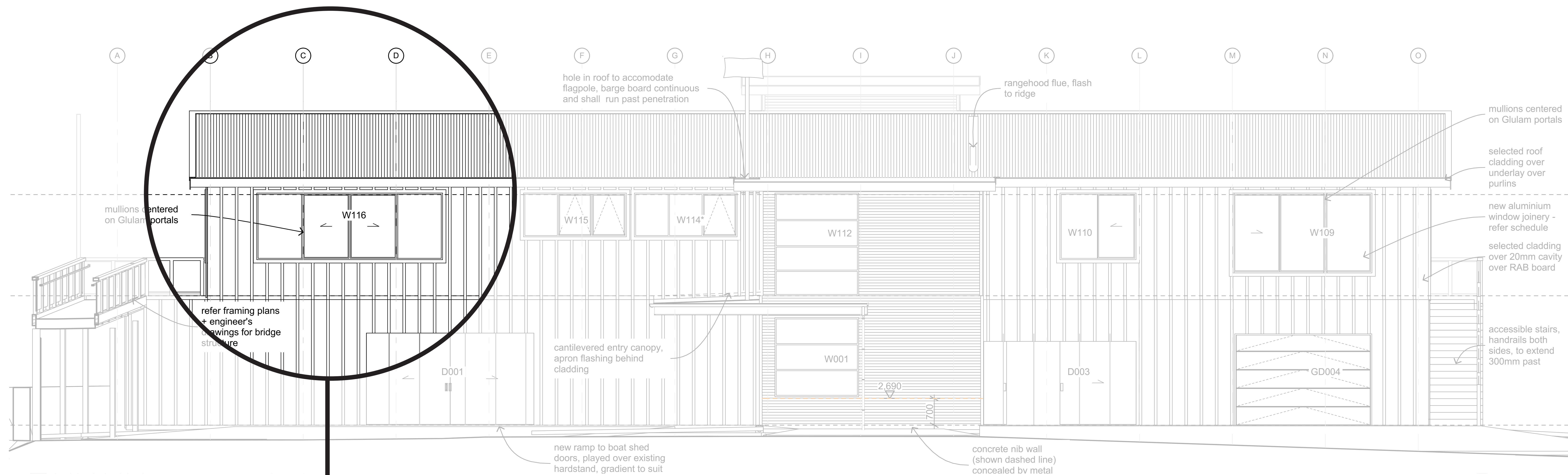
Boat & Beach Wise Education Centre

Equipment Shed: At Southern end of new building

Drawing 4.0

Date 13/11/2017

Version 2



Inside classroom

The classroom on the northern deck of the new building will be used in the delivery of the Boat & Beach Wise community, schools and youth programmes. It will include a small kitchenette, a tutor's station, audio-visual equipment and whiteboard walls. The room will be a 'wet room' meaning that it can be used by learners while still in their wet suits.

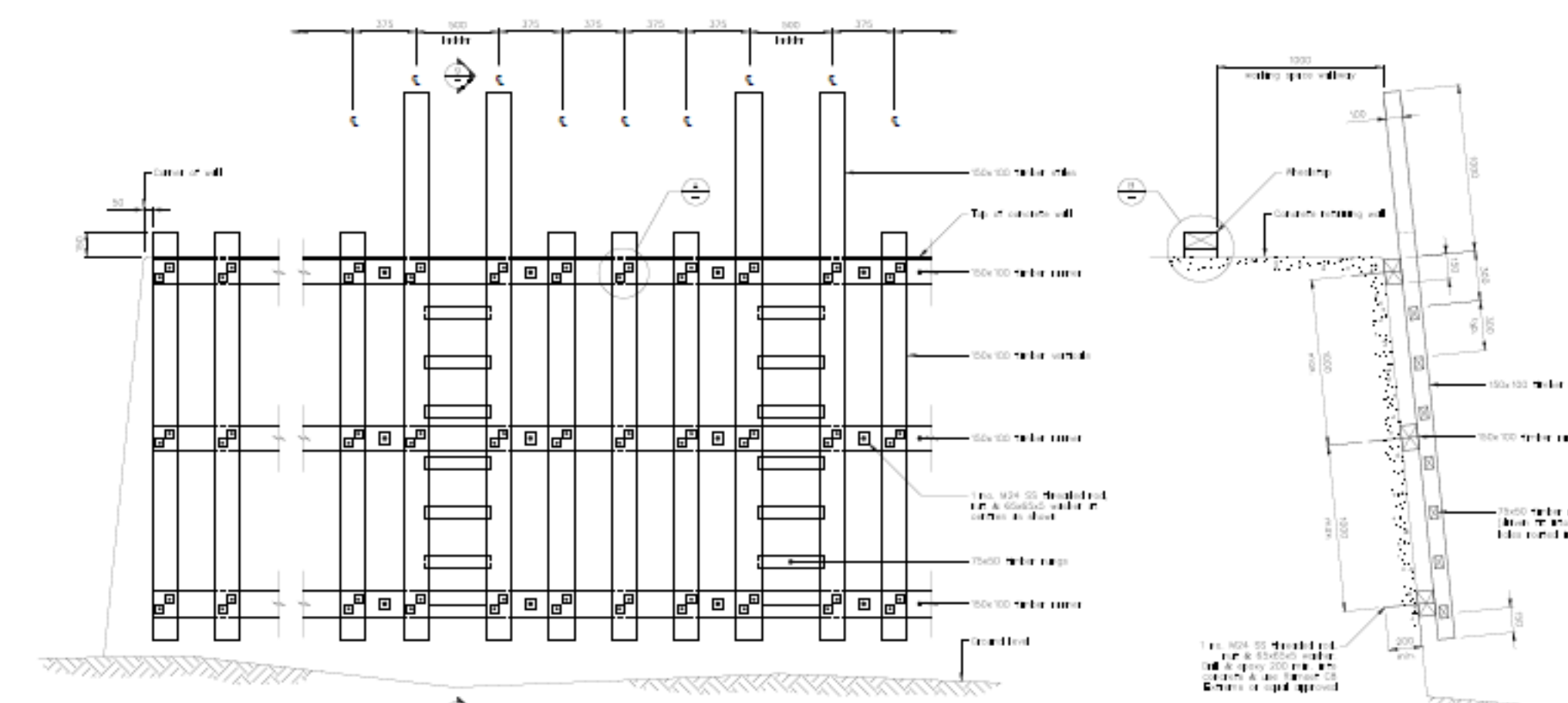
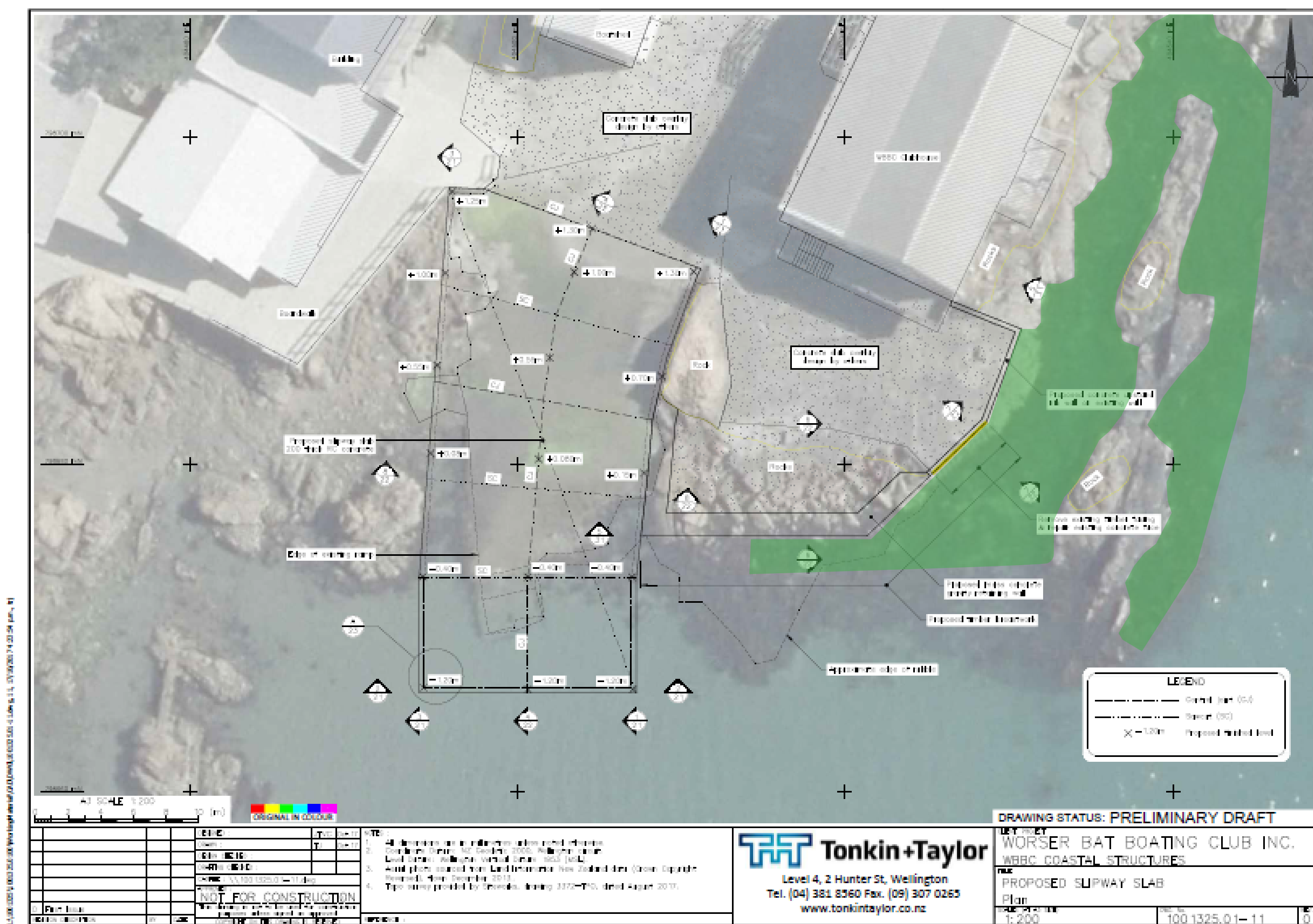
TE WHAREKURA O WAKA TUAONE
Boat & Beach Wise Education Centre

Inside Classroom: On Northern deck of new building

Drawing 5.0

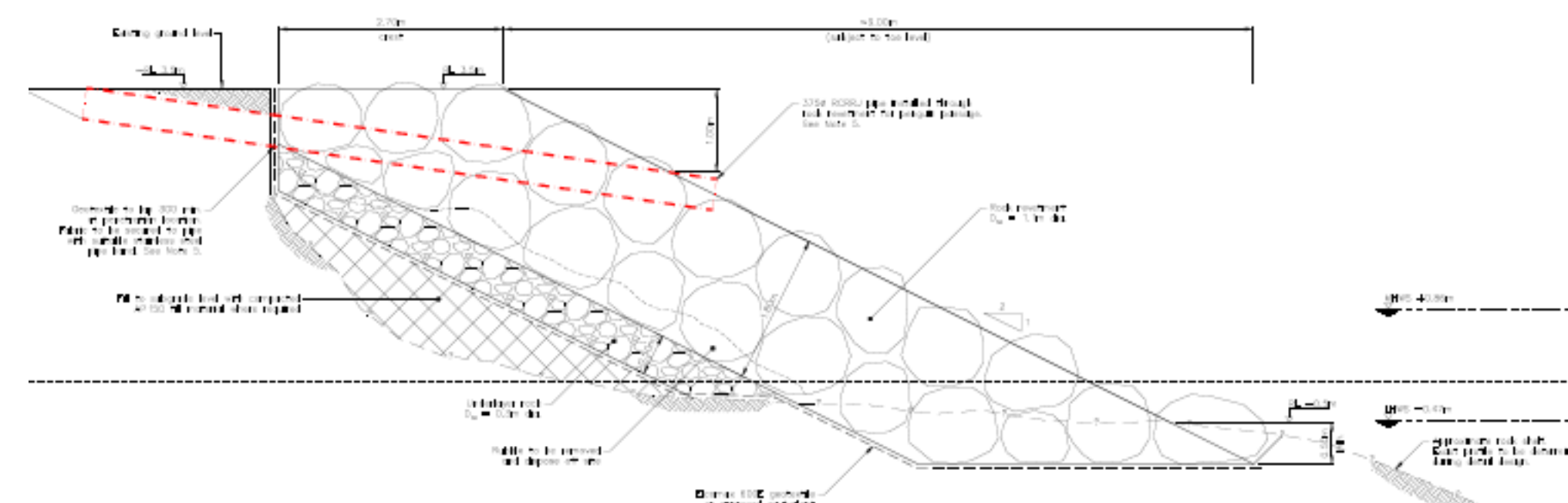
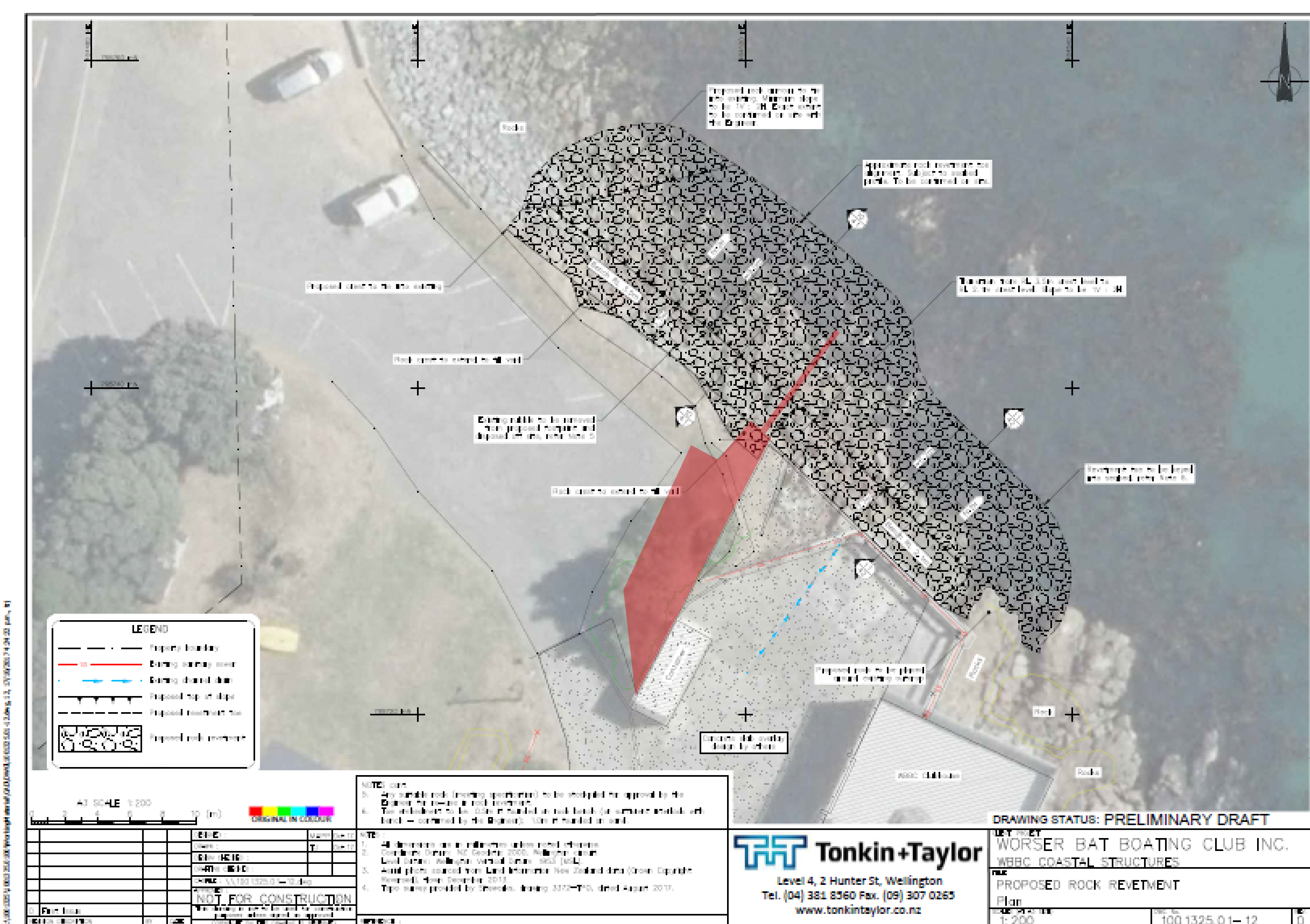
Date 13/11/2017

Version 2



Paua nursery

Local schools will work with scientists and other experts to establish and monitor a Paua nursery in and around the rocks to the south-east of the Boat & Beach Wise Education Centre. A snorkel trail will be established through the nursery with the area protected by a rahui. The new breastwork being installed by Wellington City Council will feature ladders to provide easy access in and out of the snorkel trail for both school children and the general public.



Penguin hotel

Local schools will work with scientists and other experts to establish and monitor a Penguin hotel in a garden between the car park and Boat & Beach Wise Education Centre. The Penguin hotel will include multiple nest boxes for Korora (little blue penguin). An entrance to the Penguin hotel will be created through a pipe embedded within the rock revetment to be installed by Wellington City Council.

TE WHAREKURA O WAKA TUAONE Boat & Beach Wise Education Centre

Penguin Hotel and Paua Nursery: As part of new rock revetment and new breastwork by Wellington City Council

Drawing	6.0
Date	13/11/2017
Version	2





Boat & Beach Wise

Keeping Kiwi Kids Sea Safe and Active

WAKA TUAONE

The Boat & Beach Wise Curriculum Outline

During 2017 local schools worked with the club to develop the **Boat & Beach Wise** curriculum outline called **Waka Tuaone**.

During 2018 Worser Bay School and Wellington High School students have worked with the club to flesh out the detailed designs for the **Penguin Hotel** and the **Paua Nursery**.

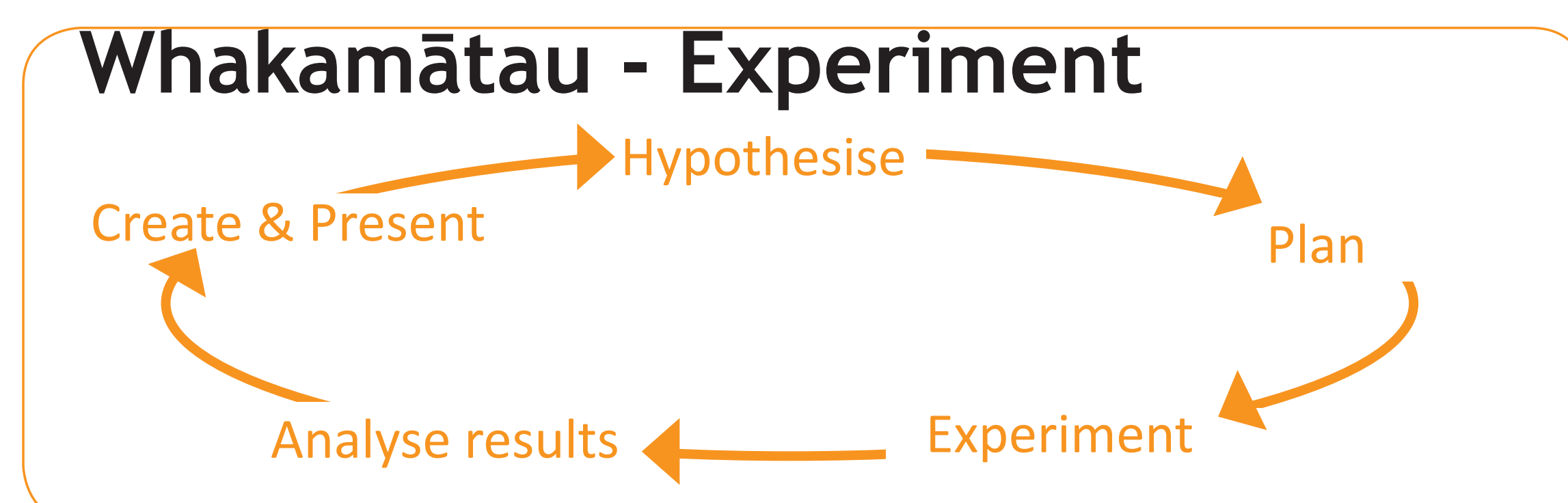
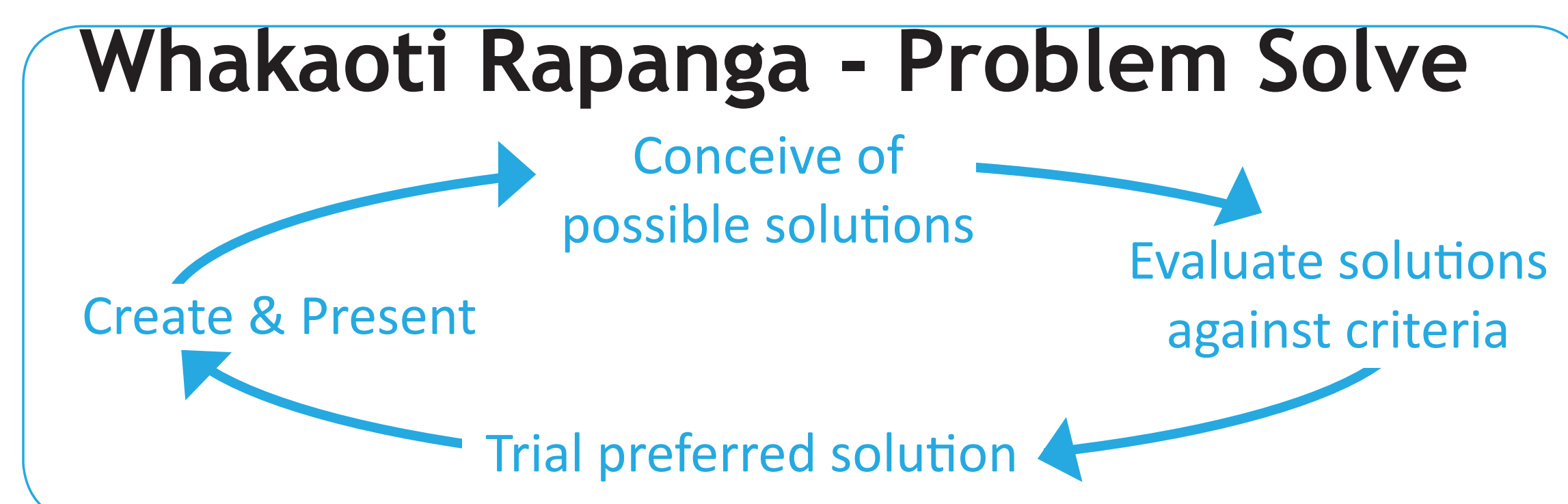
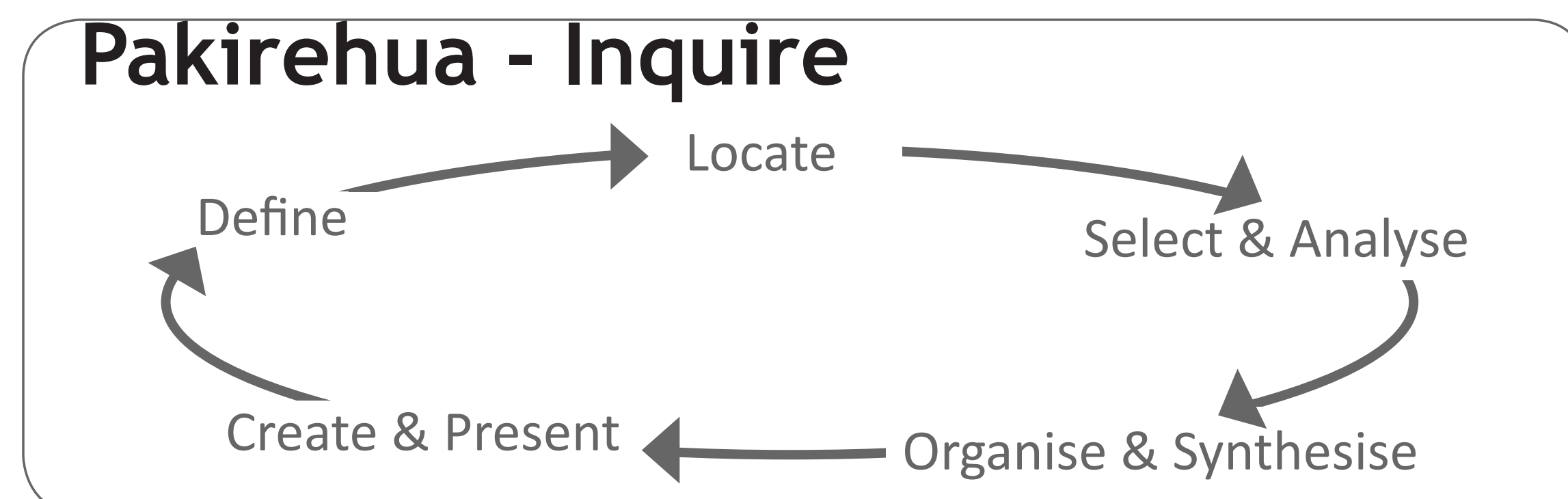
They are also worked with Wellington City Council and the Club to begin the community consultation process for the development of the **Anemone Garden** and the **Outside Classroom in the Dunes**.

During 2019 schools in the Wellington East Community of Learning | Kāhui Ako will be invited to help finalise the curriculum outline and the learning programmes that will then be available for all Wellington schools from the beginning of 2020, once the construction works are completed.



Boat & Beach Wise

Keeping Kiwi Kids Sea Safe and Active



KŌRINORINO O KUPE - IN THE WAKE OF KUPE

Module one involves learners researching the many stories associated with the settlement of Wellington Harbour from Te Upoku o Ika a Maui, Ngake, Whataitai, Turanga o Kupe, Te Whanganui a Tara, Whetu Kairangi, to Wakefield, Cuba, Tory and more. Learners chart significant landmarks on the harbour from their research and use safer boating skills and water skills for life to retrace the wake of the early settlers from Te Aroaro o Kupe to Matiu Island. In some instances the learners camp overnight on Matiu Island as a culmination of their learning.

KŌKŌKAHA - POWERED BY THE WIND

Module two involves learners researching how power can be generated from a range of renewable sources with a particular focus on wind power. Learners gain a first hand understanding of how to harness the power of the wind through the safer boating and water skills for life component of this module. Each year a specific technological challenge to harness the power of the wind is created and students use the technology problem solving process to come up with a solution. These technology solutions are celebrated at a powered by the wind festival in the local community.

MANAAKI MOANA - GUARDIANS OF THE SEA

Module three involves learners researching efforts in the global, national and regional community to reverse the degradation of marine ecosystems. Learners use water skills for life and safer boating skills as they research the impact on marine ecosystems in their own local community. They research species that have been lost or have become severely depleted in their local marine ecosystems then implement experiments to establish habitats and programmes to help restore these populations. A component of the programme is the use of rahui to help maintain sustainable kaimoana stocks.

Pūkenga Poti - Safer Boating Skills

Prep Your Boat | Check your Gear | Know the rules
Wear your life-jacket
Take two waterproof ways to call for help
Check the marine weather forecast
Avoid alcohol
Be a responsible skipper

Maritime New Zealand

Pūkenga Wai - Water Skills for Life

Water safety and awareness
Getting in and out of the water safely
Submersion - Getting under the water
Personal buoyancy - Staying afloat
Orientation in the water
Safety of self and others
Propulsion - Moving through the water

Water Safety New Zealand

